

MATLAB[®] Report Generator[™]

Release Notes

How to Contact MathWorks



www.mathworks.com Web
comp.soft-sys.matlab Newsgroup
www.mathworks.com/contact_TS.html Technical Support



suggest@mathworks.com Product enhancement suggestions
bugs@mathworks.com Bug reports
doc@mathworks.com Documentation error reports
service@mathworks.com Order status, license renewals, passcodes
info@mathworks.com Sales, pricing, and general information



508-647-7000 (Phone)



508-647-7001 (Fax)



The MathWorks, Inc.
3 Apple Hill Drive
Natick, MA 01760-2098

For contact information about worldwide offices, see the MathWorks Web site.

MATLAB® Report Generator™ Release Notes

© COPYRIGHT 2002–2012 by The MathWorks, Inc.

The software described in this document is furnished under a license agreement. The software may be used or copied only under the terms of the license agreement. No part of this manual may be photocopied or reproduced in any form without prior written consent from The MathWorks, Inc.

FEDERAL ACQUISITION: This provision applies to all acquisitions of the Program and Documentation by, for, or through the federal government of the United States. By accepting delivery of the Program or Documentation, the government hereby agrees that this software or documentation qualifies as commercial computer software or commercial computer software documentation as such terms are used or defined in FAR 12.212, DFARS Part 227.72, and DFARS 252.227-7014. Accordingly, the terms and conditions of this Agreement and only those rights specified in this Agreement, shall pertain to and govern the use, modification, reproduction, release, performance, display, and disclosure of the Program and Documentation by the federal government (or other entity acquiring for or through the federal government) and shall supersede any conflicting contractual terms or conditions. If this License fails to meet the government's needs or is inconsistent in any respect with federal procurement law, the government agrees to return the Program and Documentation, unused, to The MathWorks, Inc.

Trademarks

MATLAB and Simulink are registered trademarks of The MathWorks, Inc. See www.mathworks.com/trademarks for a list of additional trademarks. Other product or brand names may be trademarks or registered trademarks of their respective holders.

Patents

MathWorks products are protected by one or more U.S. patents. Please see www.mathworks.com/patents for more information.

Summary by Version	1
Version 3.12 (R2012a) MATLAB® Report Generator™ Software	4
Version 3.11 (R2011b) MATLAB® Report Generator™ Software	6
Version 3.10 (R2011a) MATLAB® Report Generator™ Software	7
Version 3.9 (R2010b) MATLAB® Report Generator™ Software	8
Version 3.8 (R2010a) MATLAB® Report Generator™ Software	11
Version 3.7 (R2009b) MATLAB® Report Generator™ Software	12
Version 3.6 (R2009a) MATLAB® Report Generator™ Software	15
Version 3.5 (R2008b+) MATLAB® Report Generator™ Software	16
Version 3.4 (R2008b) MATLAB® Report Generator™ Software	17
Version 3.3 (R2008a) MATLAB® Report Generator™ Software	18
Version 3.2.1 (R2007b) MATLAB® Report Generator™ Software	19

Version 3.2 (R2007a) MATLAB® Report Generator™	
Software	20
Version 3.1 (R2006b) MATLAB® Report Generator™	
Software	21
Version 3.0.1 (R2006a+) MATLAB® Report Generator™	
Software	22
Version 3.0 (R2006a) MATLAB® Report Generator™	
Software	23
Version 2.3.1 (R14SP3) MATLAB® Report Generator™	
Software	24
Version 2.3 (R14SP2+) MATLAB® Report Generator™	
Software	25
Version 2.2 (R14SP1+) MATLAB® Report Generator™	
Software	28
Version 2.1 (R14+) MATLAB® Report Generator™	
Software	31
Version 2.0 (R14) MATLAB® Report Generator™	
Software	33
Version 1.3 (R13) MATLAB® Report Generator™	
Software	36
Compatibility Summary for MATLAB® Report Generator™ Software	37

Summary by Version

This table provides quick access to what's new in each version. For clarification, see “Using Release Notes” on page 2.

Version (Release)	New Features and Changes	Version Compatibility Considerations	Fixed Bugs and Known Problems
Latest Version V3.12 (R2012a)	Yes Details	Yes Summary	Bug Reports Includes fixes
V3.11 (R2011b)	Yes Details	No	Bug Reports Includes fixes
V3.10 (R2011a)	Yes Details	No	Bug Reports Includes fixes
V3.9 (R2010b)	Yes Details	No	Bug Reports Includes fixes
V3.8 (R2010a)	No	No	Bug Reports Includes fixes
V3.7 (R2009b)	Yes Details	Yes Summary	No
V3.6 (R2009a)	No	No	No
V3.5 (R2008b+)	Yes Details	No	Bug Reports Includes fixes
V3.4 (R2008b)	No	No	Bug Reports Includes fixes
V3.3 (R2008a)	No	No	Bug Reports Includes fixes
V3.2.1 (R2007b)	Yes Details	No	Bug Reports Includes fixes
V3.2 (R2007a)	Yes Details	No	Bug Reports Includes fixes
V3.1 (R2006b)	Yes Details	No	Bug Reports Includes fixes

Version (Release)	New Features and Changes	Version Compatibility Considerations	Fixed Bugs and Known Problems
V3.0.1 (R2006a+)	No	No	Bug Reports Includes fixes
V3.0 (R2006a)	Yes Details	Yes Summary	Bug Reports Includes fixes
V2.3.1 (R14SP3)	Yes Details	No	Bug Reports Includes fixes
V2.3 (R14SP2+)	Yes Details	No	Bug Reports Includes fixes
V2.2 (R14SP1+)	Yes Details	Yes Summary	No bug fixes
V2.1 (R14+)	Yes Details	No	No bug fixes
V2.0 (R14)	Yes Details	Yes Summary	“Known Problems” on page 35
V1.3 (R13)	Yes Details	No	No bug fixes

Using Release Notes

Use release notes when upgrading to a newer version to learn about:

- New features
- Changes
- Potential impact on your existing files and practices

Review the release notes for other MathWorks® products required for this product (for example, MATLAB® or Simulink®). Determine if enhancements, bugs, or compatibility considerations in other products impact you.

If you are upgrading from a software version other than the most recent one, review the current release notes and all interim versions. For example, when you upgrade from V1.0 to V1.2, review the release notes for V1.1 and V1.2.

What Is in the Release Notes

New Features and Changes

- New functionality
- Changes to existing functionality

Version Compatibility Considerations

When a new feature or change introduces a reported incompatibility between versions, the **Compatibility Considerations** subsection explains the impact.

Compatibility issues reported after the product release appear under Bug Reports at the MathWorks Web site. Bug fixes can sometimes result in incompatibilities, so review the fixed bugs in Bug Reports for any compatibility impact.

Fixed Bugs and Known Problems

MathWorks offers a user-searchable Bug Reports database so you can view Bug Reports. The development team updates this database at release time and as more information becomes available. Bug Reports include provisions for any known workarounds or file replacements. Information is available for bugs existing in or fixed in Release 14SP2 or later. Information is not available for all bugs in earlier releases.

Access Bug Reports using your MathWorks Account.

Documentation on the MathWorks Web Site

Related documentation is available on mathworks.com for the latest release and for previous releases:

- Latest product documentation
- Archived documentation

Version 3.12 (R2012a) MATLAB Report Generator Software

This table summarizes what's new in Version 3.12 (R2012a):

New Features and Changes	Version Compatibility Considerations	Fixed Bugs and Known Problems
Yes Details below	Yes Summary	Bug Reports Includes fixes

New features and changes introduced in this version are:

- “Enhanced Table Components” on page 4
- “Title Page Formatting Enhancements” on page 5
- “Text Component Supports Subscripts and Superscripts” on page 5

Enhanced Table Components

You can use the following new components to create and format a table:

- Table
- Table Column Specification
- Table Header
- Table Body
- Table Footer
- Table Row
- Table Entry

Formatting options that the Table component and its child components support include:

- Text color and alignment
- Row background colors
- Inclusion of images

- Inclusion of hyperlinks
- Table cells spanning columns and rows

You can conditionally control the content or format of a table.

For more information, see “Table Formatting Components”.

Compatibility Considerations

Releases earlier than R2012a included a different Table component. Starting in R2012a, that component is now called the Array-Based Table component.

The Array-Based Table component produces the same output, and has the same properties, as it did when it was called the Table component. The Array-Based Table component converts a rectangular array into a table and inserts the table into the report.

If a report that was created in a previous release already includes a Table component, the output is the same as in previous releases. To change property values for that component in R2012a or later, use the Array-Based Table dialog box.

Title Page Formatting Enhancements

For PDF and HTML reports, you can use the Stylesheet Editor to position title page elements (for example, title, copyright, and images) anywhere on the front or reverse side of the title page in any order. You can specify the size, color, weight, and slant of text elements.

For details, see “Modify Title Page Properties”.

Text Component Supports Subscripts and Superscripts

You can include a subscript or superscript in a paragraph, using a Text component.

Version 3.11 (R2011b) MATLAB Report Generator Software

This table summarizes what's new in Version 3.11 (R2011b):

New Features and Changes	Version Compatibility Considerations	Fixed Bugs and Known Problems
Yes Details below	No	Bug Reports Includes fixes

New features and changes introduced in this version are:

- “Full Page Image Option for PDF Reports” on page 6
- “Include Legal Notice, Report Creation Date, and Copyright on the Title Page” on page 6

Full Page Image Option for PDF Reports

To display full-page images in PDF reports, set the **Paper orientation** property to the new **Full page image (PDF only)** option. The following components provide this new option:

- Axes Snapshot
- Figure Snapshot

The Image component has a **Full page image (PDF only)** check box, which provides the same functionality as the **Full page image (PDF only)** property option.

Include Legal Notice, Report Creation Date, and Copyright on the Title Page

The Title Page component includes a new **Display legal notice on title page** check box. Use this option to include the legal notice, report creation date, and copyright information on the title page of reports that use PDF or Microsoft® Word format.

Version 3.10 (R2011a) MATLAB Report Generator Software

This table summarizes what's new in Version 3.10 (R2011a):

New Features and Changes	Version Compatibility Considerations	Fixed Bugs and Known Problems
Yes Details below	No	Bug Reports Includes fixes

New features and changes introduced in this version are:

- “Improved PDF Pagination” on page 7
- “Export XML Comparison Results to the Workspace” on page 7

Improved PDF Pagination

Reports generated using PDF output format produce better pagination, including:

- Section titles are on the same page as the associated text (now section titles cannot appear as orphans at the bottom of a page).
- Captions are on the same page as their associated images.

Export XML Comparison Results to the Workspace

You can now export XML comparison results to the MATLAB base workspace. You can use the results data for tasks such as further analysis or incorporating into different reports.

For details, see “Export Results to the Workspace” in the MATLAB Report Generator™ User’s Guide.

Version 3.9 (R2010b) MATLAB Report Generator Software

This table summarizes what's new in Version 3.9 (R2010b):

New Features and Changes	Version Compatibility Considerations	Fixed Bugs and Known Problems
Yes Details below	No	Bug Reports Includes fixes

New features and changes introduced in this version are:

- “Complete Text Included in Reports” on page 8
- “Linking to MATLAB Commands” on page 8
- “Insert Variable Component Enhancements” on page 9
- “Nest Setup File Component Supports Relative Links” on page 9
- “Enhanced Error Handling Code for Evaluate MATLAB Expression Component” on page 9
- “Transposable Columns for Handle Graphics Summary Table Component” on page 9
- “Additional Date Format for Title Page Component” on page 9
- “Improved XML Comparison Report” on page 9

Complete Text Included in Reports

Any component that displays text in reports now displays the whole text, without any truncation.

Linking to MATLAB Commands

Using the Link component, in a report you can now include a link that executes a MATLAB command.

Insert Variable Component Enhancements

The `Insert Variable` component includes several new options for specifying the content that the component displays and the table layout that the component uses.

Nest Setup File Component Supports Relative Links

The `Nest Setup File` component includes a new **Link to external report is relative** option, which makes the link to the nested report a relative link. This feature facilitates including a report on a Web site.

Enhanced Error Handling Code for Evaluate MATLAB Expression Component

The `Evaluate MATLAB Expression` component includes enhanced error handling code that you can easily customize (for example, the error handling code can stop report generation, with or without displaying an exception). The default error handling code now supports MATLAB class exception handling, using the `evalException` variable instead of `lastError`.

Transposable Columns for Handle Graphics Summary Table Component

For the `Handle Graphics Summary Table` component, use the new **Transpose table** check box to change the summary table rows into columns in the generated report. Specifying this option puts the property names in the first column and the values in the other columns.

Additional Date Format for Title Page Component

The `Title Page` component includes an additional date format for the **Include report creation date** field: `yyyy/mm/dd`.

Improved XML Comparison Report

Reports for comparisons of XML files have a new faster user interface, with changed parameters displayed in a separate panel for easier review. The enhanced report now has color highlighting for new and changed items.

For details, see “Explore the XML Comparison Report” in the MATLAB Report Generator User’s Guide.

Version 3.8 (R2010a) MATLAB Report Generator Software

This table summarizes what's new in Version 3.8 (R2010a):

New Features and Changes	Version Compatibility Considerations	Fixed Bugs and Known Problems
No	No	Bug Reports Includes fixes

New features and changes introduced in this version are:

Version 3.7 (R2009b) MATLAB Report Generator Software

This table summarizes what's new in Version 3.7 (R2009b):

New Features and Changes	Version Compatibility Considerations	Fixed Bugs and Known Problems
Yes Details below	Yes — Details labeled as Compatibility Considerations in descriptions of new features and changes. See also Summary.	Bug Reports Includes fixes

New features and changes introduced in this version are:

- “Stylesheets and Stylesheet Data Items Now Alphabetized” on page 12
- “Improved Images in Word and RTF Reports on Windows Platforms” on page 13
- “Required Products Information for MATLAB/Toolbox Version Number Component” on page 13
- “Adobe Illustrator Image File Format No Longer Supported” on page 13
- “Navigation Controls for XML Comparison Report” on page 14

Stylesheets and Stylesheet Data Items Now Alphabetized

When you create or modify a stylesheet, the Report Explorer **Options** pane now alphabetically sorts the stylesheets and the data items in each stylesheet category.

Compatibility Considerations

The order in which a stylesheet or data item appears in a list may have changed from the order used in previous releases.

Improved Images in Word and RTF Reports on Windows Platforms

To provide better graphics quality in reports using the Word document format or RTF (Rich Text format) on Windows® platforms, the default format for Handle Graphics® images is now Windows metafile format. The default had been black and white TIFF.

You can control the image format using the MATLAB preferences or the MATLAB Report Generator preferences, or from snapshot components such as the Axes Snapshot component.

Compatibility Considerations

To change the image format back to the previous default of black and white TIFF, change the preferences.

Required Products Information for MATLAB/Toolbox Version Number Component

The MATLAB/Toolbox Version Number component now supports options to display information based on whether a Simulink model or Stateflow chart requires a MathWorks product. This feature does not apply to reports on MATLAB or toolbox code.

Adobe Illustrator Image File Format No Longer Supported

Compatibility Considerations

The **Image file format** options for the Axes Snapshot and the Figure Snapshot components no longer include Adobe® Illustrator. If you wish to integrate a MATLAB Report Generator image into Adobe Illustrator, specify a image file format supported by Adobe Illustrator, such as PDF, and then open the image file in Adobe Illustrator.

Navigation Controls for XML Comparison Report

The XML comparison report has new navigation controls to step through differences in the report. You can use the toolbar buttons or the **XML** menu to move to the next or previous group of changes.

For details, see “Explore the XML Comparison Report” in the MATLAB Report Generator User’s Guide.

Version 3.6 (R2009a) MATLAB Report Generator Software

This table summarizes what's new in Version 3.6 (R2009a):

New Features and Changes	Version Compatibility Considerations	Fixed Bugs and Known Problems
No	No	No bug fixes

There are no new features or changes in this version.

Version 3.5 (R2008b+) MATLAB Report Generator Software

This table summarizes what's new in Version 3.5 (R2008b+):

New Features and Changes	Version Compatibility Considerations	Fixed Bugs and Known Problems
Yes Details below	No	Bug Reports Includes fixes

New features and changes introduced in this version follow.

Comparison of XML Files

New comparison report for pairs of XML files.

For details, see “Comparing XML Files” in the MATLAB Report Generator documentation.

See also the following new demo: `m1xml_testplan`.

Version 3.4 (R2008b) MATLAB Report Generator Software

This table summarizes what's new in Version 3.4 (R2008b):

New Features and Changes	Version Compatibility Considerations	Fixed Bugs and Known Problems
No	No	Bug Reports Includes fixes

There are no new features or changes in this version.

Version 3.3 (R2008a) MATLAB Report Generator Software

This table summarizes what's new in Version 3.3 (R2008a):

New Features and Changes	Version Compatibility Considerations	Fixed Bugs and Known Problems
No	No	Bug Reports Includes fixes

There are no new features or changes in this version.

Version 3.2.1 (R2007b) MATLAB Report Generator Software

This table summarizes what's new in Version 3.2.1 (R2007b):

New Features and Changes	Version Compatibility Considerations	Fixed Bugs and Known Problems
Yes Details below	No	Bug Reports Includes fixes

New features and changes introduced in this version follow.

Text Formatting Options for Title Page, Text, and Paragraph Components

This release includes new text formatting options for the Title Page, Text, and Paragraph components.

For more information, see the MATLAB Report Generator documentation.

Version 3.2 (R2007a) MATLAB Report Generator Software

This table summarizes what's new in Version 3.2 (R2007a):

New Features and Changes	Version Compatibility Considerations	Fixed Bugs and Known Problems
No	No	Bug Reports Includes fixes

There are no new features or changes in this version.

Version 3.1 (R2006b) MATLAB Report Generator Software

This table summarizes what's new in Version 3.1 (R2006b):

New Features and Changes	Version Compatibility Considerations	Fixed Bugs and Known Problems
No	No	Bug Reports Includes fixes

There are no new features or changes in this version.

Version 3.0.1 (R2006a+) MATLAB Report Generator Software

This table summarizes what's new in Version 3.0.1 (R2006a+):

New Features and Changes	Version Compatibility Considerations	Fixed Bugs and Known Problems
No	No	Bug Reports Includes fixes

Version 3.0 (R2006a) MATLAB Report Generator Software

This table summarizes what's new in Version 3.0 (R2006a):

New Features and Changes	Version Compatibility Considerations	Fixed Bugs and Known Problems
Yes Details below	Yes—Details labeled as Compatibility Considerations , below. See also Summary.	Bug Reports Includes fixes

New features and changes introduced in this version are:

- “User Interface and Performance Enhanced” on page 23
- “XML File Format Changed” on page 23

User Interface and Performance Enhanced

The Report Explorer interface has a number of enhancements. The **View** menu has commands to increase and decrease font size and to show the message window if it is not displayed.

MATLAB Report Generator performance has improved. Reports are often generated more rapidly and with less chance of running out of memory.

XML File Format Changed

The format of XML files has changed in V3.0 (R2006a).

Compatibility Considerations

In V3.0 (R2006a), Report Explorer and the `rptconvert` command can convert XML files produced by the report generation process in V2.3.1 (R14SP3) and previous versions. However, in V2.3.1 (R14SP3) and previous versions, Report Explorer and the `rptconvert` command cannot convert XML files produced by the report generation process in V3.0 (R2006a).

Version 2.3.1 (R14SP3) MATLAB Report Generator Software

This table summarizes what's new in Version 2.3.1 (R14SP3):

New Features and Changes	Version Compatibility Considerations	Fixed Bugs and Known Problems
Yes Details below	No	Bug Reports Includes fixes

New features and changes introduced in this version follow.

- “Stylesheets Modify PDF Headers and Footers” on page 24

Stylesheets Modify PDF Headers and Footers

This release adds support for modifying the content of headers and footers in PDF reports. This feature is implemented using stylesheet cells and cell groups. A *cell group* contains one or more stylesheet cells. A *stylesheet cell* is a set of values that determine the content of a particular portion of the header or footer for a page.

Two cell groups, **Header Content** and **Footer Content**, are available for PDF reports. You can use templates to specify XML code that defines the content for a header or footer.

Version 2.3 (R14SP2+) MATLAB Report Generator Software

This table summarizes what's new in Version 2.3 (R14SP2+):

New Features and Changes	Version Compatibility Considerations	Fixed Bugs and Known Problems
Yes Details below	No	Bug Reports Includes fixes

New features and changes introduced in this version are:

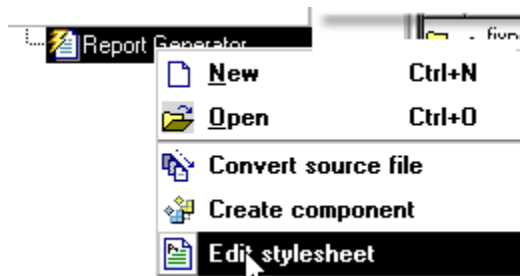
- “Stylesheet Editor” on page 25
- “Table Cell Spanning” on page 26
- “Generating Microsoft Word Documents as .doc Files” on page 26
- “Improved Graphical User Interface” on page 27

Stylesheet Editor

You can use the Stylesheet Editor to customize the formatting of your HTML, PDF, and Word documents. For example, you can specify fonts, paper layout, table presentation, as well as other characteristics of your final report.

Customizing reports by editing stylesheets gives you the flexibility to create reports that conform to corporate style guidelines and requirements.

To open the Stylesheet Editor, right-click **Report Generator** in the Outline pane of the Report Explorer and then click **Edit Stylesheet** on the shortcut menu, as shown:



For more information about using the Stylesheet Editor, see “Create Custom Stylesheets” in the MATLAB Report Generator documentation.

Table Cell Spanning

You can create advanced table layouts for property tables. The advanced layouts include cells that span multiple rows or columns.

Generating Microsoft Word Documents as .doc Files

You can generate reports that are saved as Microsoft Word documents with the .doc extension. You can also convert XML source files that are generated by the report generation process to .doc files.

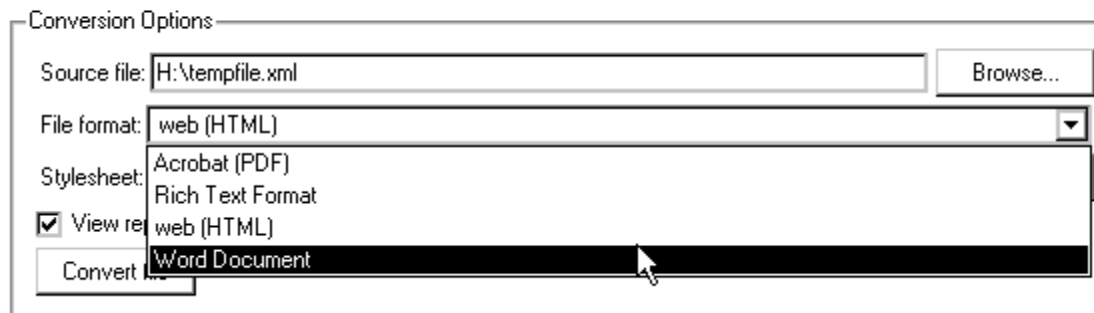
The reports you create are easier to distribute via e-mail, to share with others, and to manage.

You must have Microsoft Word software installed to use this feature, and you must be running the MATLAB Report Generator software on a Microsoft Windows system.

To use this feature select **Word Document** from the **Stylesheet** drop-down list in the Convert Source File dialog box, as shown:

Convert Source File

The Source File Converter transforms DocBook XML source files created by the Report Generator into a formatted document, such as HTML, RTF, or PDF.



Improved Graphical User Interface

This version of the MATLAB Report Generator software has the following changes and improvements to the graphical user interface:

- The File Converter has a **Source File** drop-down list. Click **Browse** to navigate to a folder to select a source file. The default folder is the current folder.
- In the File Converter, you can select a stylesheet from the drop-down list and click **Edit** to open the Stylesheet Editor.
- An improved mechanism detects and displays errors that occur when you attempt to add a component that makes the style hierarchy invalid. Users of earlier versions may notice that warnings are now issued for components that had no problems in earlier versions. In this release, warning messages contain instructions about how to fix the problem.
- The Figure Screen Capture component has been improved to capture window decorations such as menus, title bars, and toolbars.

Version 2.2 (R14SP1+) MATLAB Report Generator Software

This table summarizes what's new in Version 2.2 (R14SP1+):

New Features and Changes	Version Compatibility Considerations	Fixed Bugs and Known Problems
Yes Details below	Yes—Details labeled as Compatibility Considerations , below. See also Summary.	No bug fixes

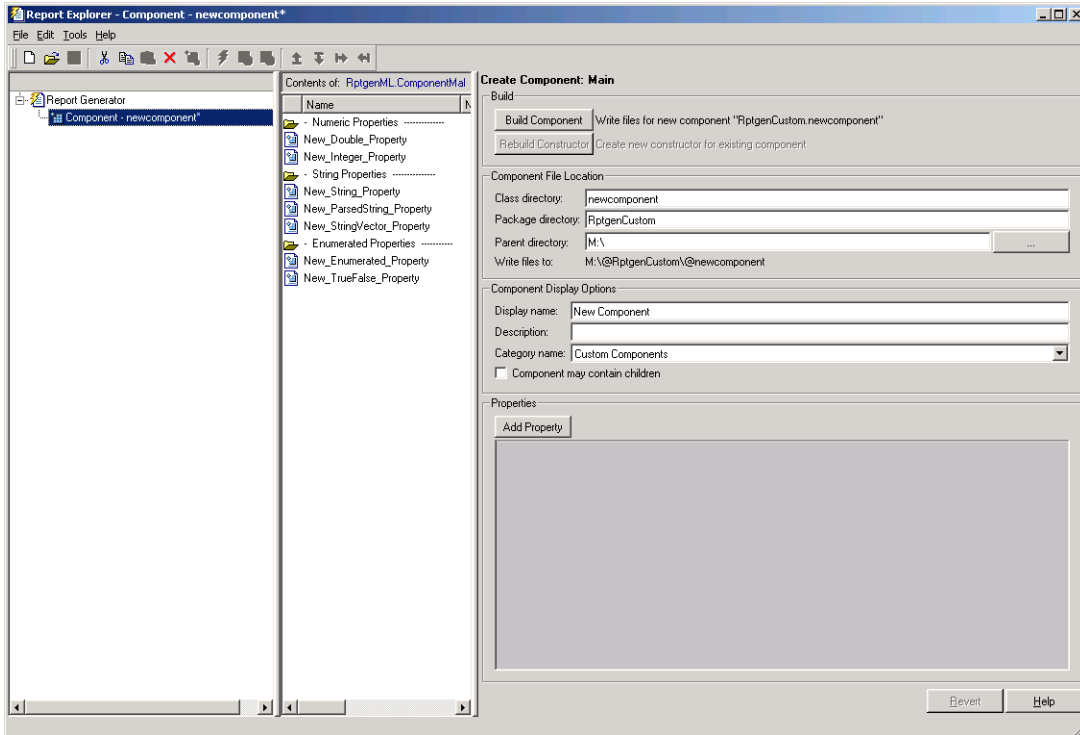
New features and changes introduced in this version are:

- “Component Creator” on page 28
- “64-bit Linux Platforms Supported” on page 30

Component Creator

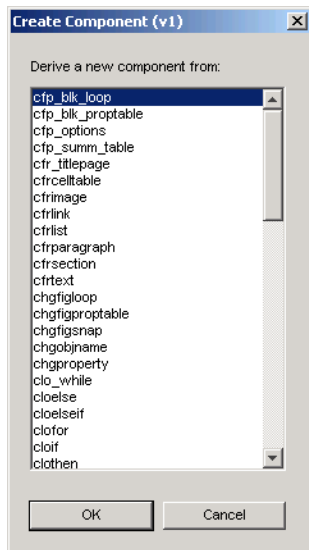
Version 2.2 of the MATLAB Report Generator software provides the Component Creator, a tool which allows you to create custom components. The Component Creator had previously been available in earlier versions of the product, and is now being reintroduced in Version 2.

With the Component Creator you create a “skeleton” object, that is, the Component Creator sets up just the raw structure of the component. You create additional required executable M-code by editing one or more files that the Component Creator produces. A picture of the Component Creator, showing its three panes, as follows:



Compatibility Considerations

Components created with Version 1 of the MATLAB Report Generator software can be imported and used in Version 2. If you want to derive a component from an existing Version 1 component, the Report Explorer presents you with a list of components from which you can choose a component to modify. The list of components is similar to the following:



64-bit Linux Platforms Supported

The MATLAB Report Generator software now supports 64-bit Linux® platforms.

Version 2.1 (R14+) MATLAB Report Generator Software

This table summarizes what's new in Version 2.1 (R14+):

New Features and Changes	Version Compatibility Considerations	Fixed Bugs and Known Problems
Yes Details below	No	No bug fixes

New features and changes introduced in this version are:

- “Improvements to Images” on page 31
- “Improved PDF Support” on page 31
- “Support for Non-English Systems” on page 31
- “Japanese PDF Reports Require Font Registration” on page 31

Improvements to Images

This version includes scaling and alignment control for high-quality bitmap Handle Graphics images.

Improved PDF Support

Improved PDF support includes:

- PDF stylesheet support for custom page headers and footers
- PDF title page stylesheet customization

Support for Non-English Systems

This version has better support for Japanese and other non-English systems.

Japanese PDF Reports Require Font Registration

For Japanese PDF support, you must register the file location of a Japanese language font in the MATLAB Report Generator software. If generated PDF documents contain unrecognizable characters, you must register that font. To register a font, use the `setPref` function:

```
RptgenML.setPref('rptgen.body.font.family.fontfile',  
'c:\winnt\fonts\msgothic.ttf');
```

This preference setting persists between sessions and only needs to be set once. If the preference is not set, a warning appears during PDF generation that the font must be set.

Version 2.0 (R14) MATLAB Report Generator Software

This table summarizes what's new in Version 2.0 (R14):

New Features and Changes	Version Compatibility Considerations	Fixed Bugs and Known Problems
Yes Details below	Yes—Details labeled as Compatibility Considerations , below. See also Summary.	“Known Problems” on page 35

New features and changes introduced in this version are:

- “Updated User Interface” on page 33
- “Change to %<<varname>> Notation” on page 34
- “Improvements to Components” on page 34
- “New Components” on page 34

Updated User Interface

The user interface has been enhanced to let you do the following:

- View, create, and edit setup files
- Generate reports
- Convert XML source files to various outputs, including HTML and RTF

Compatibility Considerations

The original version of the MATLAB Report Generator software is still available and can be accessed via the MATLAB command line. To open the version 1 interface, enter `RptgenML.v1mode(true)` at the command line. To use the new interface, enter `RptgenML.v1mode(false)` at the command line.

The previous version switch is session-dependent. To always use the previous version of MATLAB Report Generator, add `RptgenML.v1mode(true)` to your `startup.m` file.

Change to %<<varname>> Notation

The %<<varname>> notation imports text with no collapsed representation.

Improvements to Components

These components have been improved:

- Looping components intrinsically create sections and anchors.
- Handle Graphics Property and MATLAB Variable components provide increased control over output formatting.
- All summary tables support manual property names and column widths.
- Chapter/Subsection component can manually set the chapter number.
- Image component supports captions.
- Table component can override collapsed representation.
- Title Page component can be used without Chapter components.
- Figure Snapshot component supports titles and captions.
- Nest Setup File component can import multiple files by name.
- Documentation component can import HTML and RTF documents.

New Components

These components have been added:

- Axes Loop
- Axes Snapshot
- Handle Graphics Object Anchor
- Handle Graphics Summary Table
- Object Loop
- MATLAB Property Table
- To Workspace Block

Known Problems

This release has these known problems.

- “Editing Workspace Variable Names in List Component” on page 35
- “Script Generation Fails for Property Tables” on page 35
- “Report Explorer Appears Blank” on page 35

Editing Workspace Variable Names in List Component

When editing the workspace variable names in the `List` component, you must enclose the workspace variable name in single quotation marks. (216777)

Script Generation Fails for Property Tables

The **Generate M-File** option in the Report Explorer creates a script that causes an error if the setup file contains any property table components. The scripts are valid, but the code libraries which they call are broken. (217678)

Report Explorer Appears Blank

At times, the Report Explorer might appear blank with no visible content. If this happens, create a new setup file. The list of components or setup files should appear in the Options pane. (210869)

Version 1.3 (R13) MATLAB Report Generator Software

This table summarizes what's new in Version 1.3 (R13):

New Features and Changes	Version Compatibility Considerations	Fixed Bugs and Known Problems
Yes Details below	No	No bug fixes

New features and changes introduced in this version are:

- “Table Column Widths Can Be Specified” on page 36
- “Text Can Be Imported from RTF and HTML Files” on page 36

Table Column Widths Can Be Specified

In the `Cell Table` component, you can now specify table column widths.

Text Can Be Imported from RTF and HTML Files

The `Import File` component can now import formatted text from RTF and HTML source files.

Compatibility Summary for MATLAB Report Generator Software

This table summarizes new features and changes that might cause incompatibilities when you upgrade from an earlier version, or when you use files on multiple versions. Details are provided in the description of the new feature or change.

Version (Release)	New Features and Changes with Version Compatibility Impact
Latest Version V3.12 (R2012a)	See the Compatibility Considerations subheading for these new features or changes: <ul style="list-style-type: none"> • “Enhanced Table Components” on page 4
V3.11 (R2011b)	None
V3.10 (R2011a)	None
V3.9 (R2010b)	None
V3.8 (R2010a)	None
V3.7 (R2009b)	See the Compatibility Considerations subheading for these new features or changes: <ul style="list-style-type: none"> • “Improved Images in Word and RTF Reports on Windows Platforms” on page 13 • “Stylesheets and Stylesheet Data Items Now Alphabetized” on page 12 • “Adobe Illustrator Image File Format No Longer Supported” on page 13
V3.6 (R2009a)	None

Version (Release)	New Features and Changes with Version Compatibility Impact
V3.5 (R2008b+)	None
V3.4 (R2008b)	None
V3.3 (R2008a)	None
V3.2.1 (R2007b)	None
V3.2 (R2007a)	None
V3.1 (R2006b)	None
V3.0.1 (R2006a+)	None
V3.0 (R2006a)	See the Compatibility Considerations subheading for this new feature or change: “XML File Format Changed” on page 23
V2.3.1 (R14SP3)	None
V2.3 (R14SP2+)	None
V2.2 (R14SP1+)	See the Compatibility Considerations subheading for this new feature or change: “Component Creator” on page 28
V2.1 (R14+)	None
V2.0 (R14)	See the Compatibility Considerations subheading for this new feature: “Updated User Interface” on page 33
V1.3 (R13)	None